



## General Information

Admission : Free

Opening hours : 10:00AM~5:30PM

※No admission after 5:00PM

Closed : Mondays

(Tuesdays when Monday is a holiday or deferred holiday)

Dec. 28th~Jan. 4th inclusive

- Audio guide available (free of charge).
- Groups are advised to set the date and time of their visit in advance.
- Wheelchairs and lockers available (free of charge).

## Transport Access

Tōkyō Sta. ( ■ Tokyo Metro Marunouchi Line ) → Ōtemachi ( ■ Tokyo Metro Hanzōmon Line ) → **Kudanshita**

Shibuya Sta. ( ■ Tokyo Metro Hanzōmon Line ) → **Kudanshita**

Shinjuku Sta. ( ■ Toei Shinjuku Line ) → **Kudanshita**

Ueno Sta. ( ■ Tokyo Metro Ginza Line ) → Nishikojima ( ■ Tokyo Metro Tōzai Line ) → **Kudanshita**

※1 minute on foot from Kudanshita Station Exit 6



● When arriving by Toei Bus

1 minute on foot from the Kudanshita bus stop  
(Service Taka 71 (Kudanshita-Takadanobaba Sta.))

※The Shokei-kan has no car park. Please use public transport.

※Wheelchair users should access the facility via Entrance A.

## Etiquette

- Please do not touch the exhibits.
- Unauthorized photography inside the facility using cameras, mobile phones, or other devices is strictly prohibited, both to protect copyright and the materials themselves and to avoid disturbing other visitors.
- Please refrain from using mobile phones inside the facility.
- Please refrain from eating, drinking or smoking inside the facility.
- Please refrain from making noise inside the facility.
- Please do not bring pets into the facility.
- Please do not bring hazardous objects into the facility.

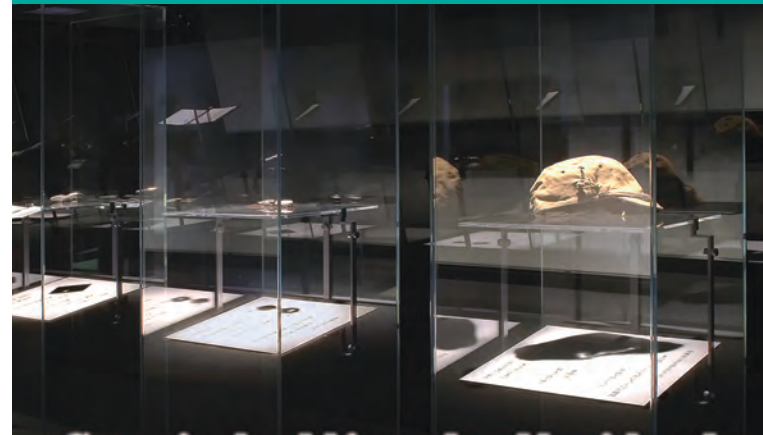


Tsukaki Square Kudanshita, 1-5-13 Kudan-Minami, Chiyoda-ku, Tokyo 102-0074

Tel : 03-3234-7821 Fax : 03-3234-7826

Website : <http://www.shokeikan.go.jp>

(3) 2013.12



Conveying hardships endured by sick and wounded servicemen and their families



“As battle lines expanded, their distance from logistic bases also grew, making it increasingly difficult to provide supplies of food and medicine to the front. This also meant that the sick and wounded soldiers could no longer be sent to the rear for proper treatment...”  
(from the narration of the Field Hospital Diorama)



## Introducing the Shokei-kan

The Shokei-kan is a national facility that collects, preserves and exhibits oral testimonies, historical materials, books and information about various hardships experienced during and after the war by sick and wounded servicemen, as well as by their families., etc. By so doing, it provides an opportunity for posterity to learn about those hardships.

The Shokei-kan was opened in March 2006.

## Why ‘Shokei-kan’?

In Japanese, **shōkei** means to pass down, succeed or inherit, and **kan** means a building, hall or museum.

**Shōkei-kan** was chosen as the name of this facility, as it amply reflects its purpose of conveying or passing down the hardships endured by sick and wounded servicemen, as well as their families, etc. In the Japanese name, **shōkei** is not written in **kanji** (Chinese characters) but in **hiragana** phonetic script, making it easier to read.

The subtitle “Historical Materials Hall for the Wounded and Sick Retired Soldiers etc.” was added to the name of the facility to convey its nature.



Illustration by Satoshi Komatsu





Sick and Wounded Servicemen



Convalescence in Wartime Society



The End of the War, Occupation and Postwar Recovery



Overcoming together



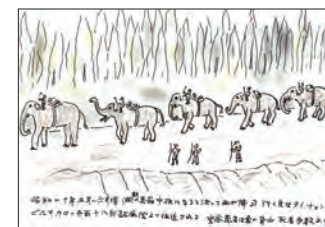
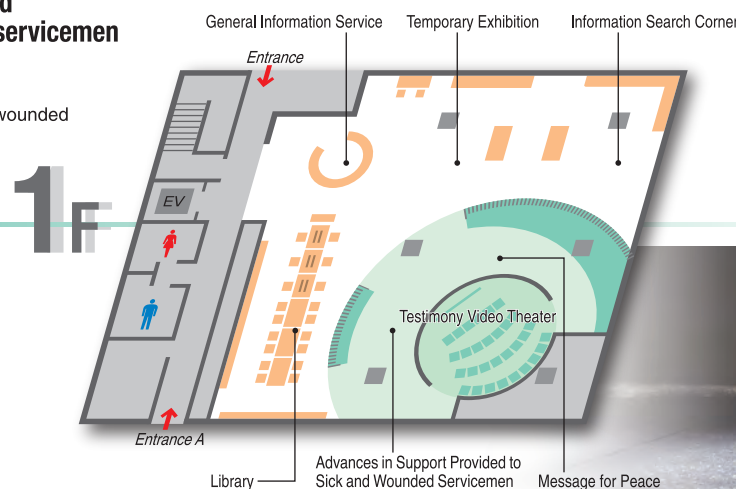
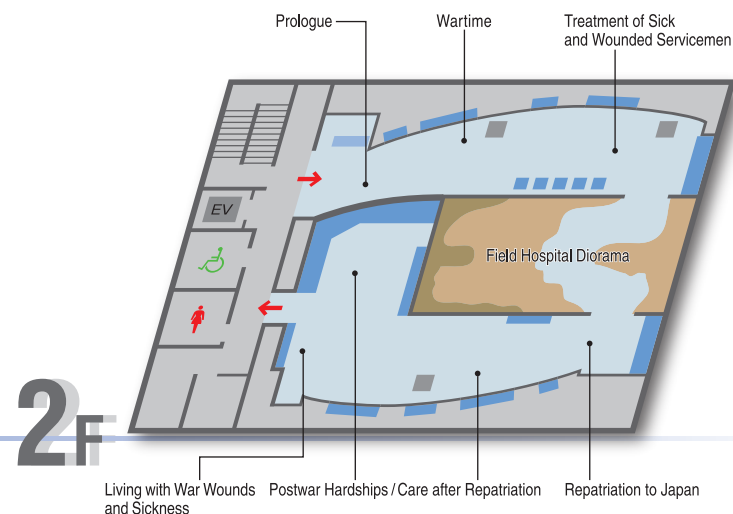
The National Sanatorium Hakone Hospital

To convey the hardships endured by sick and wounded soldiers and their families, we retrace the lives of individual soldiers, who were wounded on the battlefield based on actual testimony.

- **Wartime**・・・The Conscription System/Enlistment/Departure for Active Service
- **Treatment of Sick and Wounded Servicemen**・・・Life on the Front / Sick and Wounded Servicemen / Emergency Treatment and Evacuation / Medical Treatment on the Front.
- **Field Hospital Diorama**
- **Repatriation to Japan**・・・Transportation/Model of the Hikawa-MarU hospital ship/Film of the Hikawa-MarU hospital ship
- **Care after Repatriation**・・・Convalescence in Wartime Society/Social Rehabilitation after Discharge
- **Postwar Hardships**・・・The End of the War, Occupation and Postwar Recovery/Economic Growth and Changing Lifestyles/Living with War Wounds and Sickness/Postwar Experiences and Hardships/Overcoming together/ The National Sanatorium Hakone Hospital

We convey first hand experiences of the various hardships endured during the war via video documentation and numerous works created by the sick and wounded servicemen and their families.

- **Advances in Support Provided to Sick and Wounded Servicemen**
- **Testimony Video Theater**・・・Various experiences told by sick and wounded servicemen can be seen in video format.
- **Message for Peace**
- **Hardships conveyed in different works**
- **Temporary Exhibition**:The life of Shigeru Mura (Shigeru Mizuki).

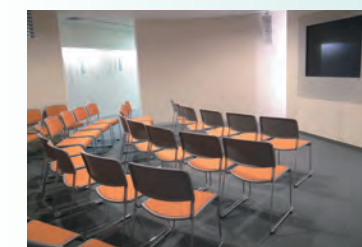


The Hikawa-MarU hospital ship



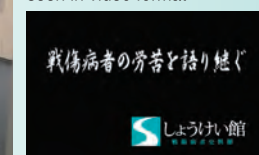
## Facility Guide

Besides the exhibits, visitors may view various other materials at the Shokei-kan. Please feel free to view them at your leisure.



## Testimony Video Theater

Various experiences told by sick and wounded servicemen can be seen in video format.



## Library

The Shokei-kan holds a collection of books on medical treatment and care policy, with a special emphasis on memoirs, written by sick and wounded servicemen, and former conscripts. Books are mostly available on open shelves, and may be searched and perused freely. Books may not be borrowed for use outside the facility, but a photocopying service is available.



## Information Search Corner

The corner enables conducting searches of the following materials:

- ① first hand materials
- ② books
- ③ testimony videos
- ④ records of sick and wounded servicemen

## DVD Lending Service

Organizations may borrow DVDs of filmed testimonies free of charge.